

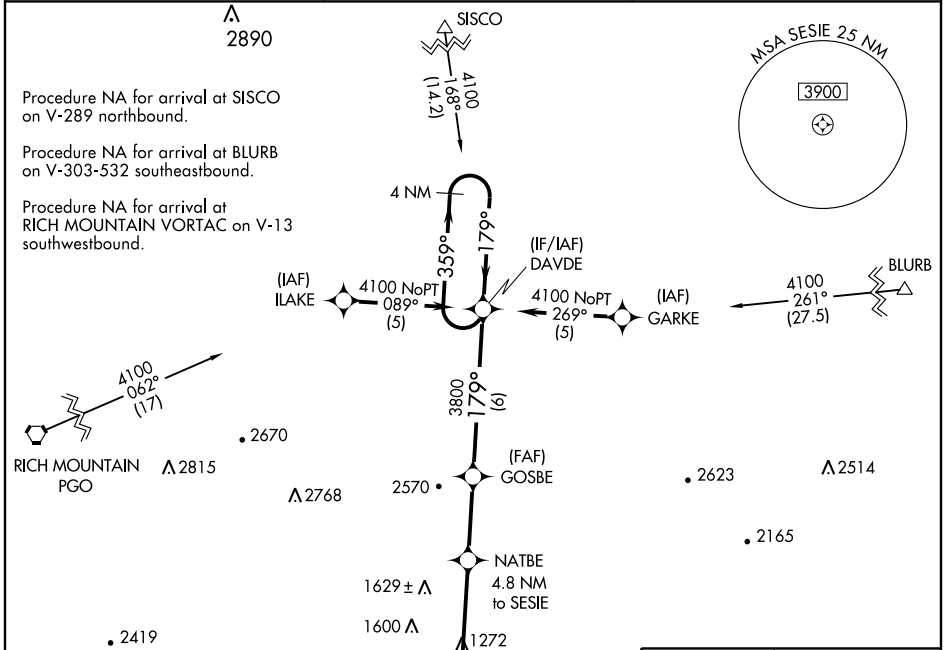
RNAV (GPS) RWY 17

MENA INTERMOUNTAIN MUNI (ME/Z)

APP CRS 179°	Rwy Idg 5000
	TDZE 1063
	Apt Elev 1079

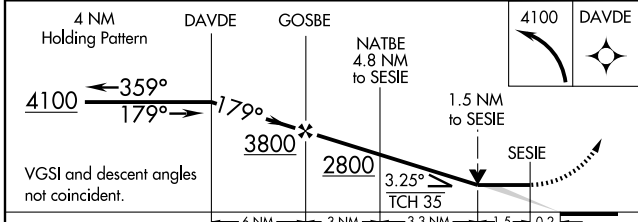
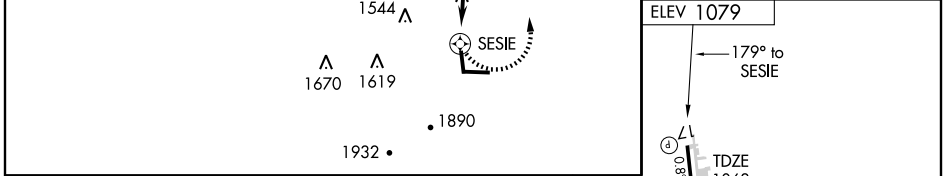
NA GPS or RNP-0.3 Required. DME/DME RNP-0.3 NA.	MISSED APPROACH: Climbing left turn to 4100 direct DAVDE WP and hold.
---	---

AWOS-3 118.025	MEMPHIS CENTER 126.1 269.0	UNICOM 122.8 (CTAF) 0
--------------------------	--------------------------------------	---------------------------------



SC-1, 25 SEP 2008 to 23 OCT 2008

SC-1, 25 SEP 2008 to 23 OCT 2008



CATEGORY	A	B	C	D
RNAV MDA	1640-1	577 (600-1)	1640-1½ 577 (600-1½)	NA
CIRCLING	1840-1 761 (800-1)	1880-1¼ 801 (900-1¼)	2000-2¾ 921 (1000-2¾)	NA

REIL Rwy 35

MIRL Rwy 17-35

HIRL Rwy 9-27 0